



www.babcockprime.co.uk



Your guide to traded educational services
for schools and settings

Directory 2017-18

Welcome to the Babcock Prime directory for 2017/18 featuring a range of traded educational services and products offered to schools, academies, multi-academy trusts and other settings to build their capacity to improve outcomes for children & young people.

The directory of traded services provides information on additional services available to schools and settings over and above the statutory services delivered on behalf of Worcestershire County Council.

We are committed to working in partnership with Worcestershire County Council, schools and settings so that together we can create sustainable, high quality, targeted services and support statutory provision.

Selecting the best support for your school or setting

Our aim is to deliver cost effective, relevant services that enable schools and settings to have access to high quality education consultancy and good value support services tailored to meet individual needs.

The directory aims to provide an overview of the specialist and targeted support that we can provide. Full service specifications can be found on the Babcock Prime website at:

www.babcockprime.co.uk.

If you do not see a service to support your needs within the directory, please contact the Traded Services Team at:

Prime-Schoolservices@babcockinternational.com
or call 0800 090 2255 to discuss your requirements.

How to purchase:

Following consultation of your requirements, the service team adviser will recommend the package or hours of delivery most effective to meet your needs. Services can then be ordered through our simple and secure online system e-Store www.babcockeducationstore.co.uk/prime

A link to the e-Store can be found by visiting: www.babcockprime.co.uk, click Shop in the menu, then follow the link to e-Store.

No price increase for 2017/2018 and Early Bird Discount

As school budgets everywhere are under great pressure, we are pleased to announce there will be no price increase across our whole range of services for 17/18 and, to add to that, we are also offering an early bird discount of 2%.

To take advantage of the advanced purchase price, confirm your order by 31st March 2017 for maintained schools and by 31st July 2017 for non-maintained schools. Additional 'Top-ups' can be purchased, as required, throughout the year.

HIGHLIGHTS for 2017/18



Better Governor

Better Governor provides you with the latest insight, developments in education, policy and practice in a way

which relates to your role as a Governor.

Better Governor gathers together articles from authoritative sources and provides guidance and effective practice from leading experts in one online platform.

Visit www.bettermgovernor.co.uk and register for free*.

**Exclusive content can be accessed when subscription is purchased (see page 18)*



Leadership Success Programme

Our Leadership Success Programme has been developed

to help school leaders manage complex organisations in an ever changing landscape. New programmes available:

- Beyond Monitoring
- Multi-Academy Trust Executive Leadership Programme
- Middle Leadership Programme
- Getting to Great

Full details of the programme are available on our website: www.babcockprime.co.uk/school-effectiveness/school-improvement/leadership-programmes



Autism Education Trust

Babcock Prime is an AET programme partner. This enables us to deliver AET training across all phases and to the wider education workforce.

Individual modules of support are available to raise your awareness and increase competency to meet the needs of children and young people on the autism spectrum.



Are you making the most of the Pupil Premium?

At your next Ofsted inspection, help ensure a positive commentary on 'the attainment and progress of pupils eligible for the pupil premium' in your overall judgement.

Undertake a Pupil Premium Audit to maximise the impact of your Pupil Premium

See page 25

Thinking of converting to an Academy or a Multi-Academy Trust?

Our NEW Start Right academy conversion service provides bespoke support to suit all levels of need.

Babcock, together with Michelmores Solicitors now offer a comprehensive start-up service of vision shaping, project management, school improvement strategy planning, finance and legal support for single school or MAT conversion.

Contact Wendy Newton for more information:
Wendy.Newton@babcockinternational.com
07568 102728



Contents

Commissioning Framework Overview	2
Education Welfare	5
Safeguarding	7
Gypsy Roma Traveller Education Team	8
English as an Additional Language	9
Learning Support Team	10
Autism/Complex Communication Needs (CCN)	11
Autism Education Trust Programme	12
Sensory Impairment	13
Early Years Consultancy (school providers)	15
Careers Advice and Guidance	16
Governor Services	18
School Improvement – Leadership	20
School Improvement Consultancy	
An External Review of Strategies and Policies	
Headteacher Appraisal	
Supported Peer Review	
Leadership Programme	
External Review of Governance	
School Improvement – Teaching, Learning & Assessment	22
Curriculum Review & Design	
Coaching	
Subject Consultancy	
Subject Network Briefings	
Better Inspection for All – Teaching, Learning and Assessment	
An External Review of Strategies and Policies	
Effective Use of Assessment and Data	
NQT Induction	
Primary Assessment Support and Moderation	
School Improvement – Narrowing the Gap	25
Effective practice in meeting the needs of vulnerable pupils, including those with SEND	
Pupil Premium Audit	
An External Review of Strategies and Policies	
Inclusion Network Meetings	
Better Inspection for All - Inclusion	
School Improvement – Better Inspection for All	27
Better Inspection for All – Whole School Improvement	
Better Inspection for All – Teaching, Learning and Assessment	
Better Inspection for All - Inclusion	
Managing your Inspection	
Free School Meals Eligibility Checking Service	30
Finance Consultancy	31
Human Resources Consultancy	32
DBS Service	33
Strategic ICT Consultancy	35
Online Safety	36
Office 365	37
Further ICT Support Packages	39

Commissioning Framework Overview

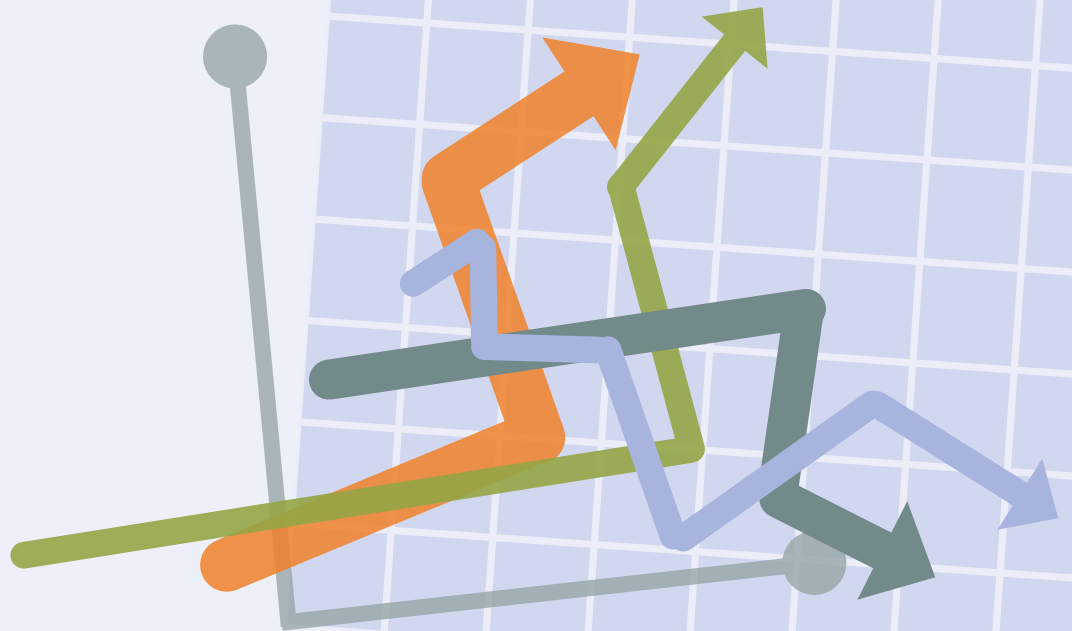
An overview of what is available as part of the commissioning framework for Worcestershire Local Authority maintained and non-maintained schools. An explicit threshold criterion is available to view in the document 'Eligibility Criteria & Support Allocation Matrices for Babcock SEN, Disabilities and Inclusion teams', which can be downloaded from our website: www.babcockprime.co.uk/about-us

	Available within the commissioning framework	Available to purchase
School Admissions	Received by maintained and non-maintained schools as part of the commissioning framework.	No service available.
Exclusions & Fair Access <ul style="list-style-type: none"> • Elective Home Education (EHE) • Children Missing Education (CME) • Exclusions • Children in Employment and Entertainment (CEE) 	Received by maintained and non-maintained schools as part of the commissioning framework.	No service available.
Free School Meals Checking	Received by maintained schools as part of the commissioning framework.	Non-maintained schools can purchase the eligibility checking service.
English as an Additional Language	Cost for maintained schools met from de-delegated funding.	Non-maintained schools can purchase an advice & guidance service and training.
Education Welfare Service	Prosecution service provided for maintained and non-maintained schools as part of the commissioning framework. Prevention service provided for maintained schools which includes an attendance healthcheck and subsequent allocation of an Education Welfare Officer for those schools with greatest need of support and a helpline service.	Maintained and non-maintained schools can purchase practical and strategic support.
Education Psychology	Statutory EHCP assessment available to maintained and non-maintained schools as part of the commissioning framework.	This will be available when capacity allows.
Gypsy Roma Traveller Support	Cost for maintained schools met from de-delegated funding.	Non-maintained schools can purchase practical support, training, advice & guidance service.
Virtual School	Received by maintained and non-maintained schools as part of the commissioning framework.	No service available.
Learning Support Team <i>(see eligibility criteria for full details)</i>	No service available.	Maintained and non-maintained schools can purchase practical support and training Specialist teaching and specialist TA support for Post-16 learners with an EHCP.
Autism/ Complex Communication Needs (CCN) <i>(see eligibility criteria for full details)</i>	Maintained Schools, Academies and Free Schools with children and young people with a diagnosis of Autism and a Worcestershire LA Statement of SEN or an EHCP. Early Years pupils as identified and referred by the Pre-School Forum, then transition support until the end of the October half term.	Maintained and non-maintained schools with children and young people with a diagnosis of autism or without a diagnosis but CCN needs and at stage of the SEND Code of Practice can purchase consultancy, intervention and training.

Hearing Impairment (see eligibility criteria for full details)	Maintained and non-maintained schools with children and young people with a diagnosis of High and Medium hearing loss.	Maintained and non-maintained schools with children and young people with a diagnosis of mild hearing loss can purchase practical and strategic support, advice and training.
Visual Impairment (see eligibility criteria for full details)	Maintained and non-maintained schools with children and young people with a diagnosis of High and Medium visual loss.	Maintained and non-maintained schools with children and young people with a diagnosis of mild visual loss can purchase practical and strategic support, advice and training.
Multi-Sensory Impairment (see eligibility criteria for full details)	Maintained and non-maintained schools with children and young people with a diagnosis of High and Medium visual and/or hearing loss.	Maintained and non-maintained schools with children and young people with a diagnosis of mild visual and/or hearing loss can purchase practical and strategic support, advice and training.
Medical Education (see eligibility criteria for full details)	Maintained schools and Academies Recoupment will be applied at the rate of 80% of the AWPU received by the school for each individual pupil taught. Independent and Out of Authority Schools: A weekly charge, equal to 80% of the AWPU and in line with the charging policy for WCC schools. Recoupment/charging for all schools will apply for the duration of tuition.	No service available.
Early Years (see eligibility criteria for full details)	Private, Voluntary, Independent and Nursery schools graded inadequate or requiring improvement, receive a level of support from the Improvement Adviser Team or School Improvement Team. Private, Voluntary, Independent and Nursery schools who care for children with SEND accessing NEF and known to PSF receive inclusion support. All Private, Voluntary, Independent and Nursery schools can attend forums, area clusters and access to online resources as part of the commissioning framework.	Private, Voluntary, Independent and Nursery schools can purchase additional practical and strategic support and training.
Governor Services	Statutory requirement to uphold a database of governing bodies, advice and issue of the 'Instrument of Government', support for maintained schools with recruitment and appointment of LA governors and provision of a training programme.	Maintained and non-maintained schools can purchase strategic support, advice & guidance and training.
Careers Advice & Guidance (CAG)	Statutory provision of monitoring, tracking and reporting on NEETs. CAG for 16 -18yr olds who are NEET and 14-16yr olds who are registered as EHE.	Maintained and non-maintained schools can purchase practical and strategic support, advice & guidance and training.
School Improvement	Maintained schools graded inadequate or requiring improvement, receive a level of support from the Improvement Adviser Team.	Maintained and non-maintained schools can purchase strategic support, advice & guidance and training.
Facilities Management	No service available.	Maintained and non-maintained schools can purchase support.
Finance Support	No service available.	Maintained and non-maintained schools can purchase support.
HR Support	No service available.	Maintained and non-maintained schools can purchase support.
ICT	No service available.	Maintained and non-maintained schools can purchase support.



trusted to deliver™



The Profile: Year End Attendance

Analyse your data and
reflect on your Attendance
Management Practice

Ofsted:

- evaluates schools' attendance in comparison to national figures
- expects schools to compare current average attendance with same periods in previous years
- requires schools to take into account differences in attendance between different groups of learners, e.g. vulnerable groups

The Year End Attendance Profile

Following a successful small scale trial and building on the success of the Attendance Data Profile, we are pleased to be able to offer a scaled down, easy to understand and yet comprehensive 12-chart visual representation of your Year End Attendance Data.

The Year End Profile focuses on;

- Whole School Attendance
- Persistent Absenteeism
- Vulnerable Groups (SEN, FSM, PP, EAL, Gender)
- Term Time Absence
- Punctuality
- Unauthorised Absence Code patterns

Benefits

- Comprehensive and comparative charts
- Data that supports Ofsted expectations
- Better understanding of your whole school Attendance Data
- Additional monitoring evidence
- Analysis of your vulnerable group data

Cost

£175

Contact the Education Welfare team to discuss your requirements:

Email: Primeedinservice@babcockinternational.com

Call: 01905 678138

"We have benefited from (EW) support...(the team has) kept us up to date on developments, produced specific reports, advised us on procedure and improving attendance...and has visited families at home. We have particularly focused on PPG children and there has been an improvement on this time last year." Deputy Head & Inclusion Manager at a Worcestershire Primary School

Education Welfare Service

The Education Welfare Service supports schools and settings to achieve Government targets for overall attendance and persistent absenteeism.

Our team of experienced Education Welfare Officers can help improve pupil attendance, raise attainment and enhance the emotional wellbeing and health of children and young people.

Example of support

A number of pupils have below 85% attendance

- Review of attendance data and identify specific areas of concern for groups of learners
- Review of internal practices & procedures and recommendations for support strategy
- Monitoring of groups and school attendance strategy
- Parent groups
- Attendance assembly
- Targeted interventions – group work to address barriers to attendance
- Improved emotional wellbeing in pupil, ability to engage in learning
- Promotes active involvement of parents

Pupils with persistent absenteeism

- Addresses safety & cost involved in teaching staff going off-site
- Casework to include home visits and/or 1 to 1 engagement with pupil
- Chair meeting between parent, pupil & school
- Set up pastoral support plan
- Monitoring & review of plan
- Improved attainment through better attendance
- Addresses safety & cost involved in teaching staff going off-site

(Our support offer is not limited to the solutions above. For further details of our support offer and related training or professional development opportunities, please visit www.babcockprime.co.uk)

Service Level Agreement

Education Welfare SLA

Bespoke time-based and flexible support is available to meet the need of your individual requirements. Upon enquiry an Education Welfare Officer (EWO) will recommend the hours required to address your concerns and ensure you get the best value from your SLA.

Cost

Delivery and cost is based on individual requirements.

3 hrs - **£175**

Termly Package (9hrs) : **£475** (saving £50)

Half Termly Package (15hrs): **£780** (saving £95)

Weekly Half-Day Package (105hrs): **£5,100** (saving £1,025)

Multiple packages can be purchased to achieve required service level.

One profile - **£393**. Three profiles - **£867** (one per term)

Attendance Profile

Attendance data profiles offer a detailed review of your attendance data and will identify strengths and areas for development. **Analysis and 1-1 consultation** to discuss report and action plan.

Year End Attendance – attendance data delivered in a comparative chart

£175

Attendance Healthcheck

Self assessment audit of policies, procedures and practice

£175

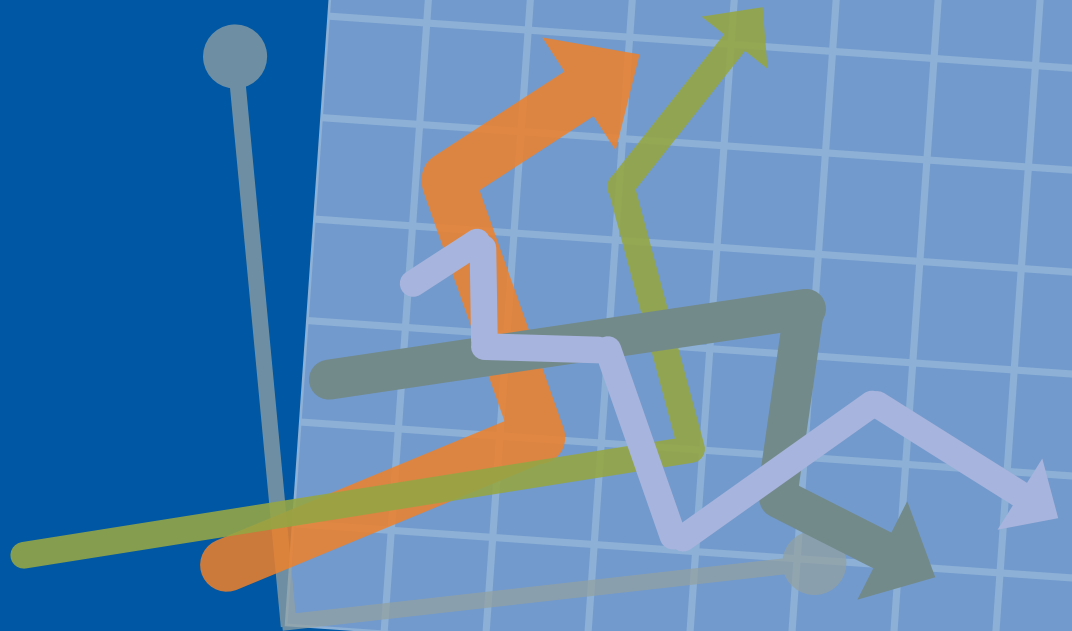
Contact the Education Welfare team to discuss your requirements:

Email: Primeedinvservice@babcockinternational.com

Call: 01905 678138



trusted to deliver™



The Profile: Attendance

Focus on Attendance: Raise Attainment and Improve Behaviour

The Attendance Profile

- identifies specific areas of concern for particular groups of learners
- supports school senior leadership team in identifying areas for future focus
- demonstrates the effectiveness of attendance strategies



Cost

One profile **£393**
 Three profiles **£867**
 (one per term)

Contact the Education Welfare team to discuss your requirements:

Email: Primeedinservice@babcockinternational.com
 Call: 01905 678138

Safeguarding

Schools and colleges and their staff are an important part of the wider safeguarding system for children.

“All staff members should receive appropriate safeguarding and child protection training which is regularly updated” (DfE statutory guidance ‘Keeping Children Safe in Education’, September 2016).

Packages of support & training	Cost
<p>Safeguarding Audit Babcock can support your school to meet statutory requirements and adopt best practice by conducting a safeguarding audit which will identify non-compliance and areas of weakness that need to be addressed. We will make recommendations where appropriate and help your school to draw up an action plan to make the necessary improvements.</p>	<p>Price on application.</p>
<p>We are able to offer a range of training on both nationally and locally accredited courses. Alternatively we can customise a session to meet your needs.</p> <ul style="list-style-type: none"> • Level 2 Child Protection Our training meets the requirements of the Worcestershire Safeguarding Children Board (WSCB) Universal and most elements of Targeted Training 1 • Safer Recruitment • Safer Recruitment (online training) <p>This cost effective 90 minute online training course is for all school staff and governors involved in recruitment.</p>	<p>To discuss your safeguarding requirements please contact Steven Wilkinson, Education Investigation Manager, Steven.Wilkinson@babcockinternational.com or call 01905 678177</p>

(Our support offer is not limited to the solutions above. For further details of our support offer and related training or professional development opportunities, please visit www.babcockprime.co.uk)



"This service is admired nationally and has received acclaim for the work they do in Worcestershire (they) have the potential to be national leaders in GRT issues." Richard O'Neill

Gypsy Roma Traveller Education Team

The Gypsy Roma Traveller (GRT) community is Worcestershire's largest ethnic minority. To improve attendance, achievement and lifelong outcomes for GRT pupils, the GRT Education Team works in partnership with schools, families, young people and professional organisations to remove barriers to education.

The team are pupil focussed and passionate about ensuring every GRT child and young person has access to education which is appropriate to their individual needs and culture. The team have a wealth of expertise and have built long standing, trusted relationships within Worcestershire GRT communities, which ensure pupil engagement and participation.

Example of support

GRT pupil on the verge of exclusion due to behavioural issues and poor attendance

Dedicated adviser to work collaboratively with school, pupil and family to develop bespoke intervention programme, which may include home visits.

- Increased emotional wellbeing in pupil, ability to engage in learning.
- Promotes active involvement of parents

Increase in racist incidents towards GRT pupils

- Staff training & guidance to raise awareness of cultural identity
- Assemblies for whole school cultural awareness
- Support schools with development of an inclusive policy

- Develop inclusive values and practices which are shared by learners/ staff, Governors/parents and communities

GRT pupils & families averse to sensitive topics being taught during PSHE & Science

ASDAN registered -Teacher led support to deliver culturally driven curriculum based courses.

- Improved outcomes and close the gap for GRT learners

Individual or multiple new to area GRT pupils starting school

- Facilitate GRT group within the school
- Support families with admissions paperwork, transport and uniform set-up and attendance guidance
- Chaperone on journey or mentor during settling in period

- Demonstrate commitment to vulnerable learners to GRT community and OFSTED
- Improve access, engagement and participation

(Our support offer is not limited to the solutions above. For further details of our support offer and related training or professional development opportunities, please visit www.babcockprime.co.uk)

Service Level Agreement

This service is delivered to maintained schools free at point of contact as part of de-delegated funding and is available to non-maintained schools to purchase

Cost

Subscription package SLA

Level 1: Access telephone, email and online advice and resources

*Level 2: As Level 1 plus up to a maximum of 18 hours per year bespoke support

*Level 3: As Level 1 plus up to a maximum of 36 hours per year bespoke support

Level 1 - £300

Level 2 - £900

Level 3 - 1,800

*Level 2 & 3 is delivered by Early Intervention Targeted Youth Workers

Youth Worker led support: **£150**
(3 hours)

Teacher led consultancy: **£225**
(3 hours)

Multiple packages can be purchased to achieve required service level

Bespoke consultancy

Purchase time when required to create a bespoke package of support. Subject to service availability. A named adviser cannot be guaranteed.


Contact the Gypsy Roma Traveller team to discuss your requirements:

Kay.Poole@babcockinternational.com | 01905 678200



babcock

trusted to deliver™



Support for pupils learning with English as an Additional Language (EAL)

The EAL advisory team provides free online resources and an advice and guidance helpdesk available to maintained and non-maintained schools in Worcestershire.

For further information contact:

Sharon Tanner:
Sharon.tanner@babcockinternational.com

Anita Scott:
Anita.scott@babcockinternational.com

The EAL service is commissioned by Worcestershire Schools Forum. Costs for maintained schools are met from de-delegated funding

In addition, to ensure your school is meeting the needs of your EAL pupils, we can provide:

- a bespoke consultancy service to follow up an initial helpdesk enquiry
- training workshops and an annual network conference
- EAL audit/ health check
- assessment guidance and tools
- a termly newsletter
- information provided to support schools with newly-arrived refugee pupils

“As a key stage 2 teacher I can now appreciate how to help children with large gaps in their learning”

Learning Support Team

The LST is a team of specialist teachers who are skilled at working with children and young people with a wide range of special educational needs.

A bespoke service is provided to schools and settings to offer practical support and targeted strategies across all key stages.

Example of support

Pupil presenting in school with significant and persistent reading and spelling issues in spite of a range of interventions

- Assessment and recommendation to place the child on the Dyslexia Pathway to monitor progress
- Recommendations provided regarding interventions
- Regular reviews of progress carried out which may lead to a Dyslexia Decision meeting and formal identification being made
- Training on developing a dyslexia friendly classroom
- Increased pupil progress and access to all areas of the curriculum
- Increase in staff skill and confidence

Pupil presenting with significant fine and gross motor difficulties

- Assessment and specific movement programmes introduced to support both fine and gross motor skills
- School TA trained in the use of Smart Moves
- School TA trained in the use of Jimbo – Fun
- Dyspraxia Pathway
- Pupil shows improvement in both fine and gross motor skills and is able to move safely around school
- Pupil’s self-esteem is improved thanks to the improvement in handwriting and the presentation of his/her work

Pupil presenting with inappropriate behaviours and finding it difficult to engage with learning

- Assessment to identify underlying difficulties, e.g. language and communication needs, or specific learning difficulty which may be leading to the presenting behaviours
- School provided with recommendations regarding classroom strategies and interventions to meet the pupil’s needs
- Staff trained/supported to deliver the interventions
- Whole staff training provided to enhance the learning environment so that it meets the needs of all pupils with similar difficulties
- Pupil’s needs are understood by all staff
- The pupil receives the necessary support
- Inappropriate behaviours reduce
- Pupil reengages with learning

(Our support offer is not limited to the solutions above. For further details of our support offer and related training or professional development opportunities, please visit www.babcockprime.co.uk)

Service Level Agreement

Learning Support SLA

Bespoke consultancy time based support can be purchased in increments of 3 hour sessions.

An adviser will consult with you to formulate a programme of support based on individual need and ensure you get the best value from the SLA.

Multiple sessions can be purchased to achieve required service level.

Cost

£265 (3hrs)

EARLY BIRD PRICING: £225 (3hrs)

Contact the Learning Support team to discuss your requirements:

Patsy.Bowdige@babcockinternational.com | Marguerite.Watt@babcockinternational.com | 01905 678145

“The pupil intervention was brilliant, thorough and useful. The students you work with get so much out of it”

Autism / Complex Communication Needs (CCN)

Support and advice to help learners with autism or complex communication needs to achieve their full potential.

Building the capacity of your school/setting to meet the individual needs of children and young people from Early Years to F/HE.

Examples of support & suggested timeframes - each intervention can be tailored to suit school and young person’s needs:

Direct, ‘Hands On’ Support:

- Modelling good autism practice – 3 hours
- Bespoke package of 6 x 1 hour sessions which may include:
 - LEGO based therapy
 - Homunculi approach
 - Social Communication Groups
 - Emotional Literacy
- Increased engagement with learning
- Increased social resilience
- Improved emotional well-being
- Improved academic progress
- More positive relationships with all

Specialist Autism Assessment to support:

- Identification of strengths, learning barriers and strategies to reduce those barriers – 6 hours
- The Plan/Do/Review Cycle – 5 hours
- Identification of transition needs – 5 hours
- Year 11 assessments for FE – 6 hours
- Year 13 pupils applying for the ‘Disabled Student’s Allowance’ for Higher Education – 6 hours
- Improved academic engagement and progress
- Clear identification of pupil needs
- Successful transition
- Improved access to further education and better life outcomes

Further direct interventions:

- Revision & Exam skills - 8 x 1 hour sessions
- Pupil Mentoring – 4 x 1 hour sessions
- Implementation of the AET Autism Standards – 6 x 1 hours sessions
- Autism/sensory awareness and understanding for the learner – 4 x 1 hour
- Sensory audits of the environment and young person
- Improved academic progress
- Improved emotional well-being
- Whole school improvement
- Improved engagement with the learning environment

Support & Advice to Parents and Staff:

- Parent Workshops – a range of Autism-related topics 6 x 1 hour sessions
- Diagnosis awareness – general or tailored bespoke 3 x 1 hour sessions
- Staff Workshops – autism related topics 6 x 1 hour sessions
- Advice on differentiation of the curriculum – 3 hours
- Improved home/school relationships
- Improved independence and emotional well-being
- School meets statutory duties of Equality Act, SEN Code of Practice & Ofsted criteria

(Our support offer is not limited to the solutions above. For further details of our support offer and related training or professional development opportunities, please visit www.babcockprime.co.uk)

Service Level Agreement	Cost
<p>Autism/CCN SLA</p> <p>Upon enquiry a specialist adviser will recommend the hours required to address your concerns and ensure you get the best value from your SLA.</p> <p>Contact the Autism/CCN team to discuss your requirements: Karen.Broderick@babcockinternational.com 01905 678172</p>	<p>Delivery and cost is based on individual requirements. £225 (per multiple of 3 hours)</p> <p>Packages:</p> <p>Autism Package 1: 38 x 3hrs £7,500 (saving £1,050)</p> <p>Autism Package 2: 19 x 3 hrs £3,750 (saving £525)</p>



trusted to deliver™



Autism Education Trust Programme

Delivered by the highly experienced Babcock Prime Autism/ Complex Communication Needs team, the national Autism Education Trust programme offers face to face training programmes for all professionals working in various early years, school and post 16 settings.

The programme will form an essential part of your continuing professional development and will play a key role in supporting your organisation to meet the needs of children and young people on the autism spectrum.

MAKING SENSE OF AUTISM

90 minutes - Basic autism awareness training for all staff within any education setting (Tier 1)

GOOD AUTISM PRACTICE

1 day - Practical knowledge, hands-on tools and techniques for all staff working directly with children and young people on the autism spectrum (Tier 2)

LEADING GOOD AUTISM PRACTICE

1 day - For staff who may train or lead other staff in their setting, focusing on developing good autism provision (Tier 3)

PROGRESSION FRAMEWORK

½ day - Introduction to the framework with key features and guidance on how to use it. Hands on training for all staff involved in setting learning goals and recording progress for pupils

EXTENDING GOOD AUTISM PRACTICE

½ day - Deepens delegates' understanding, including theories of autism. Advancing skills in developing and applying strategies to facilitate progress and achievement

COMPLEX NEEDS AND PARTICIPATION

1 day - Focused training for staff in a specialist provision to support a pupil with complex needs and aid participation (including development of their personal or EHC plan)

Extending Good Autism Practice, Complex Needs and Participation and Progression Framework only available as part of the schools AET programme.

Cost

- Making Sense of Autism: 1-25 delegates **£375** / 26-50 delegates **£550**
- Good Autism Practice: 1-25 delegates **£1,250** / 26-50 delegates **£2,000**
- Leading Good Autism Practice: **£175** per delegate
- Extending Good Autism Practice: 1-25 delegates **£625** / 26-50 delegates **£1,250**
- Complex Needs and Participation: 1-25 delegates **£1,250** / 26-50 delegates **£2,000**
- Progression Framework: **£110** per person

For further information on the AET programme contact:

Karen Broderick, Principal Teacher – Autism/ CCN Team:
Karen.Broderick@babcockinternational.com

““The team have literally been a lifeline for us.... without the input of the team in our lives, she would not be the confident and capable girl that she is. They have not only made her education accessible because of their training and experience, but they have made it fun! They have taught her communication skills so that she can build good friendships and every single one of (her) team have ‘gone above and beyond’ for us at some point” (parent feedback)

Sensory Impairment

A team of experienced and qualified mainstream and special school teachers with additional Mandatory Qualifications for specialist teachers of pupils with hearing impairment, visual impairment or multi-sensory impairment. The team also consists of an educational audiologist, qualified paediatric mobility specialist registered with HAVIUK and peripatetic TAs with nationally recognised Braille or BSL qualifications.

We support schools and settings with a bespoke service of practical support and targeted strategies using National Sensory Impairment Partnership (NatSIP) criteria and exceed national performance for the outcomes for children with a sensory impairment.

Example of support

Pupil has recently been diagnosed with Auditory Processing Disorder (APD) or staff notice the learner has an inability to process what is heard. Staff unable to provide appropriate support.

- Staff awareness training
- 1:1 personalised learning & intervention programmes
- Improved engagement and attainment of learner

Student has unilateral hearing loss and is missing out on information which is causing a reduction in engagement and attainment level

- Audiological assessment/ acoustic survey
- Recommendations for improved positioning/ layout and acoustics
- Deaf awareness training/ assemblies
- 1:1 personalised learning & intervention programmes
- Introduction to BSL training
- Improved engagement and attainment of learner
- Narrow the gap between the attainment of vulnerable learners and their peers

Student has mild visual impairment preventing full access to the curriculum and as a result attainment level has decreased and student is suffering from anxiety

- Functional assessment and curriculum observation
- Touch-typing package
- 1:1 personalised learning/ counselling & intervention programmes
- Increased engagement and attainment of learner
- Promoting a sense of wellbeing, developing positive emotional health

(Our support offer is not limited to the solutions above. For further details of our support offer and related training or professional development opportunities, please visit www.babcockprime.co.uk)

Service Level Agreement	Cost
Sensory Impairment SLA Upon enquiry a specialist adviser will recommend the hours required to address your concerns and ensure you get the best value from your SLA.	£200 (3 hrs) Multiple packages can be purchased to achieve required service level.
Bespoke Example A: Braille course Attendees would be taught uncontracted and/or contracted braille by our experienced, specialist braille experts. This would be suitable for all teachers and TAs and could potentially extend to parents and other professionals (purchase 2x 3 hours).	£400
Bespoke Example B: Auditory Processing Disorder (APD) Package Assess the needs of pupil diagnosed with APD, on-site training for staff and/or effective support plans for learners with APD.	from £400
Bespoke Example C: SEN Audit Check accessibility for learners with mild sensory impairment. Report and recommendations to ensure your school/setting is Single Equality Act Compliant (purchase 2x 3 hours).	£400
Bespoke Example D: Emotional Health and Wellbeing training and support 1 hour per week (12 weeks) during term time (to include one-to-one counselling, group work and staff development). Provision of advice and guidance to ensure the psychological needs of sensory impaired learners are met (purchase 2x 3 hours).	£800

Contact the Sensory Impairment team to discuss your requirements:

Melissa.Boxall@babcockinternational.com | 01905 678189



trusted to deliver™

A complete solution for developing professionals in education



Training: high quality courses that develop best practice and professional skills



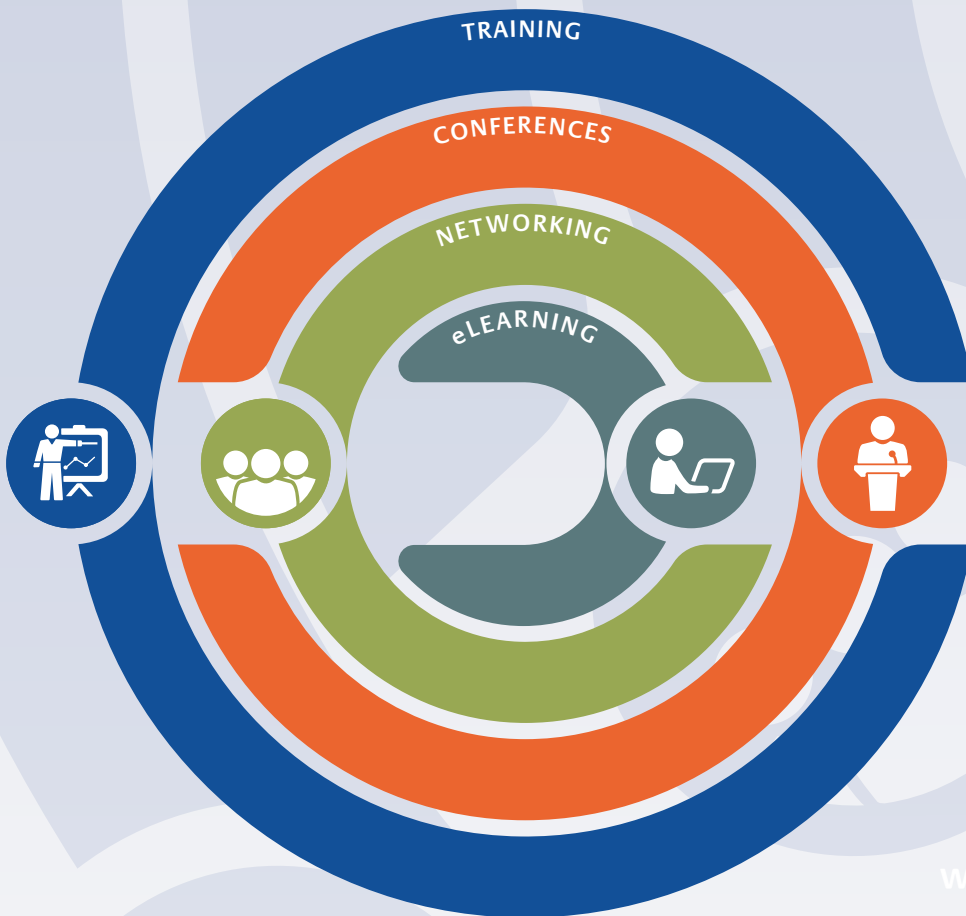
Conferences: keep fully informed with relevant, up-to-date, topical events



Networking: make professional connections with peers and experts to drive performance in schools



eLearning: accessible and affordable online sessions and resources



www.babcockprime.co.uk

Early Years Consultancy (school provider)

Enhance the quality of teaching and learning in your foundation stage and develop the leadership capacity of your staff with the support of our bespoke consultancy, training and advice service to assist Early Years in local authority maintained settings.

Example of support

Additional staff required and whole setting professional development required

- Support with staff recruitment
- Identification of staff development required
- Bespoke staff training
- Effective leadership and management
- Enhanced quality of provision
- Confident staff

Children not able to show that their learning is embedded in child initiated play and show progress in their skills and knowledge

- Joint observation and feedback
- Quality Assure Self-Evaluation
- Advice and guidance to support all aspects of EYFS practice and provision
- Inclusion audits
- Provide ECERS Audit (Environmental Rating Scales)
- Meet the requirements of the Ofsted framework
- Enhance quality of provision
- Improved outcomes for children

Observations of behaviour and learning are not used adequately to identify the next steps for all children in the cohort

- Input on behaviour management
- Observations to support children with emerging needs
- Modelling of interventions
- Bespoke staff training
- Raise attainment
- Improved outcomes for children

(Our support offer is not limited to the solutions above. For further details of our support offer and related training or professional development opportunities, please visit www.babcockprime.co.uk)

Service Level Agreement

Early Years (School Providers) SLA

Upon enquiry an adviser will recommend the hours required to address your concerns and ensure you get the best value from your SLA.

Early Years Inclusion (school providers) SLA

Cost

£250 (3 hours)

£250 (3 hours)

Contact the Early Years Team to discuss your requirements:

Primeeycc@babcockinternational.com | 01905 678134



"I have been working with the team for just over 3 years. I have always found the team to be professional and approachable...I have to say that they are a pleasure to work with" Training Provider, Redditch

Careers Advice and Guidance Service

Our highly experienced, Level 6 qualified Careers Advice Team help young people to identify opportunities and pathways open to them when making decisions about their futures. Bespoke and impartial guidance and support programmes are delivered to individuals or groups to enable them to make well informed realistic decisions about career and learning pathways.

Our Advisers have a wealth of experience with a particular specialism in Key Stage 4 transition, NEET prevention (Not in Education, Employment or Training) and Post-16 engagement in learning. A key strength of the team is their extensive knowledge of local and national opportunities; key growth sectors and the future jobs market.

Example of support

A number of students are at risk of NEET (RONI)

- Allocation of a named adviser to work on a 1:1 basis to provide careers information advice and guidance (including out-of-term time support)
- Production of a SMART action plan for each pupil
- Support with referrals/applications
- CV & interview preparation
- Realistic option choices
- Narrow the gap between the attainment of vulnerable learners and their peers
- Successful transition to Post-16 training and/or learning

Providing CIAG to pupils educated offsite e.g. MET or PRU

- Visits to unit or home as needed
- 1 to 1 engagement with pupil
- SMART action plan
- Successful transition
- Narrow the gap between the attainment of vulnerable learners and their peers

Cover for in-house CIAG or additional support during key times of the year

- Tailored support to cover sickness, maternity leave or other absences
- Support your existing careers programme and staff when additional "hands on deck" are required, e.g. results day, Yr9 options, parents' evenings and other careers events
- Completion of data returns to Local Authority:
 - September Guarantee
 - Yr 11 Activity Survey return
 - January destination census
- Schools CIAG plan is maintained and pupils careers education is not disrupted
- Pupils are able to make informed decisions at critical points such as Yr9 option choices and post 16/18 opportunities
- Save teaching staff time
- Schools equipped with data for action planning

(Our support offer is not limited to the solutions above. For further details of our support offer and related training or professional development opportunities, please visit www.babcockprime.co.uk)

Service Level Agreement

Careers Advice & Guidance SLA

Upon enquiry an adviser will recommend the hours required to address your concerns and ensure you get the best value from your SLA.

Cost

£115 (3 hours)

Multiple packages can be purchased to achieve required service level

Bespoke Example A: £115 (3hrs- includes 1.5hrs delivery) – 1 bespoke workshop (variety of topics available, for example: job sector knowledge, cv workshops and alternatives to HE)

Bespoke Example B: £2,300 – 1 day per week (10 weeks) during term time to be used flexibly according to need (20x3hrs)

To discuss your requirements for Careers Advice and Guidance contact:

worc.post16eng@babcockinternational.com | 01905 678147



trusted to deliver™



Be a better governor



What governors and clerks need to know, when they need to know it.

Full access to all written articles on Better Governor is free of charge to all registered users. For access to webinars, podcasts, screencasts and much more, why not take out a subscription for just £199 per annum, per school.

register now at
www.bettermgovernor.co.uk

*The Governor Services team:
"has provided a range of training
that has enabled the governors
to better understand their roles
and purpose " Himbleton First
Ofsted report May 2016*

Governor Services

The role of governing boards is a demanding one with ever higher expectations. The Governor Services team provides access to valuable training, advice and guidance to ensure your governing board has the knowledge, skills and confidence to effectively support leadership and outcomes for your pupils.

Example of support

New in a role on the Governing board

- Relevant, timely updates, advice and guidance to ensure your governing board has access to the latest developments, current legislation and best practice
- Professional development opportunities e.g. New Governor Induction, Clerk's Workshop, Ofsted Inspection Framework, Complaints & Appeals, Curriculum Innovation
- Save time with quick access to guidance
- Improve confidence and ability to take part in governing board meetings
- Ensure Ofsted compliance
- Enhance the quality of provision and support better outcomes for pupils

Governing board looking to evaluate effectiveness to meet Ofsted criteria and standards

- Bespoke consultancy and review to identify areas for development and provide guidance on how these can be achieved and improved upon
- Support in the identification and/or provision of training to develop knowledge and understanding to meet strategic functions
- Strengthen school leadership by improving governance
- Strengthen procedures and practices
- Improve effectiveness
- Improve on and meet Ofsted inspection criteria and standards

(Our support offer is not limited to the solutions above. For further details of our support offer and related training or professional development opportunities, please visit www.babcockprime.co.uk)

Service Level Agreement	Cost
Governor Services Subscription (includes full access to Better Governor)	£225 - Maintained £250 - Non-Maintained
Better Governor Full access includes access to webinars, podcasts, screencasts and much more.	Standalone School £199 MATs/federation Lead School £199 Additional Schools within the MAT £99
External review of Governance SLA (following an Ofsted recommendation)	£1,250 (2.5 days) Purchase: 5 x 3 hrs £1,500 (3 days) Purchase: 6 x 3 hrs - includes a 3 hour follow-up progress review of the action plan after 3 months)
Governor Consultancy SLA Upon enquiry an adviser will recommend the hours required to address your concerns and ensure you get the best value from your SLA	£250 (3 hours)
Additional Services	
<ul style="list-style-type: none"> • Bespoke Governor Training for a Governing Board, MAT/ MAC or cluster of schools • Comprehensive training and development programme 	

Contact the Governor Services team to discuss your requirements:

primegovernorservices@babcockinternational.com | 01905 678142

School Improvement

Maximise your school capacity to raise standards and improve outcomes for learners through development of self-sustaining school improvement. Our core team of School Improvement Advisers and extensive associate team has a diverse range of skills, knowledge and successful experience working in partnership with schools and settings to achieve your development goals and deliver outstanding outcomes for all learners.

Our School Improvement Advisers provide advice, consultancy and professional development for leadership and management, subject and curriculum staff and classroom based support with a clear focus for improving learner outcomes.

To bring about continuous improvement, the level of support provided is in proportion to the needs of each school or setting.

How Babcock can help your school?

We work in partnership with you to understand the context of your school, its specific challenges and needs, to establish coherent development strategies at all levels of the organisation to bring about sustainable improvement. Research shows that strong leadership and quality first teaching are the key factors in schools that are good or outstanding.

Our School Improvement Service offers a comprehensive menu of bespoke consultancy and professional development to support whole school improvement and help you achieve your goals.

- **Leadership**

We provide leadership support at all levels from executive leadership through to middle leaders. Our consultancy and professional development programmes are designed to develop the leadership capacity of your staff.

- **Teaching, Learning and Assessment**

In times of reform to policies in relation to expectations around curriculum, testing and assessment, we have created a comprehensive package to support schools through periods of change. We provide bespoke consultancy, briefings, assessment, advice and guidance to ensure that children and young people have the highest quality learning experiences.

- **Narrowing the Gap**

At both national and local level, providing opportunities for disadvantaged and vulnerable pupils to achieve good outcomes has proved to be a significant challenge. Our tried and tested strategies for narrowing the gap include advice, consultancy, audits and networking opportunities to support to reduce attainment gaps between different groups of learners. This is a key focus for Ofsted inspections.

- **Better Inspection for All**

We provide Ofsted trained advisers who are able to deliver objective appraisals, audits and reviews with clearly defined strengths and areas for development to validate school's own judgement in assessing the quality of provision including leadership capacity, teaching and learning.

Further details of School Improvement support are available on pages: 20-28

To discuss your requirements for School Improvement contact:

Prime-Schoolservices@babcockinternational.com | 0800 090 2255

(Babcock) "has given good support to the school... particularly in developing the senior leadership team so that it is an effective driver of improvement in the school"
Foley Park Primary Ofsted inspection Report

Leadership

Strong leadership is the key to self-sustaining capacity to improve. We offer a comprehensive range of training packages and bespoke consultancy to support and strengthen leadership at all levels. Highly experienced consultants will be able to offer an objective evaluation of the strengths and areas for development within your leadership team at school or provide bespoke training to tighten procedures and approaches to effective leadership which leads to school improvement. Alternatively, there is a wide range of quality leadership training packages to choose from.

Example of support

School Improvement Consultancy

With changes in inspection and external accountability, our tailored consultancy visits will provide all of the challenge and insight that headteachers and senior leaders value, but offer you the opportunity to set the agenda, ensuring that the focus will be supporting your school to achieve your goals.

Schools and settings across First, Primary, Middle, Secondary and Post-16 can ensure excellent value from consultancy tailored to your school's needs:

- Joint lesson observations
- Staff professional development
- Planning to raise standards
- Support with self-evaluation processes

- Secure continuous school improvement
- Improve or sustain your Ofsted rating
- Quality assure your self-evaluation
- Develop the leadership capacity of your staff

An External Review of Strategies and Policies

Advice, bespoke consultancy and exemplar documents to support senior leaders through an external evaluation of the school's key strategies and policies.

Provided as a whole school evaluation or with a specific focus on core subjects.

Support can include:

- Reviewing the quality of self-evaluation documentation and action planning
- Evaluating the quality of monitoring, evaluation and training schedule
- Providing an external view and recommendations
- Providing exemplar materials

- Improve or sustain Ofsted judgements

Headteacher Appraisal

In maintained schools, academies and free schools, governing boards have a statutory duty to appoint an external adviser for the Headteacher/ Principal appraisal process. Our advisers have the skills, experience and objectivity to provide the level of support and advice required to ensure a robust Headteacher Appraisal process through:

- Liaising with the Clerk to Governors to agree a review and planning meeting
- Facilitating a 90 minute appraisal meeting to review and agree objectives
- Agree monitoring arrangements
- Providing notes to support governors in writing the report

- Secure high quality leadership

(Our support offer is not limited to the solutions above. For further details of our support offer and related training or professional development opportunities, please visit www.babcockprime.co.uk)

Service Level Agreement

School Improvement Consultancy

The exact support required, dates and times are discussed with the school prior to delivery. Multiple sessions can be purchased to achieve required service level.

An External Review of Strategies and Policies

The exact support required, dates and times are discussed with the school prior to delivery. Multiple sessions can be purchased to achieve required service level.

Headteacher Appraisal

Cost

£250 (3hrs)

Package 1: £1,485 (18 hours)

£250 (3hrs)

£250 (3hrs)

Example of support

Supported Peer Review

Aligned with September 2016 Ofsted Framework, Supported Peer Reviews are a process which results in a key judgement about the extent to which the team can uphold a school's own self-evaluation.

This sustainable approach to school improvement is for all schools, particularly those on a journey to excellence.

A School Improvement Adviser can support schools to work in partnership within a small group to self-evaluate, celebrate, challenge, support and learn together, provide training to the review team to guide them through the process, help them use and apply 'tools' secure plan the review, facilitate meetings and deal with unforeseen issues that may arise.

- Secure continued improvement rapidly through collaboration
- Support the school's continued development
- Enhance professional development for school leaders

Leadership Success Programme

Developed to help school leaders manage complex organisations in an ever changing landscape. Programmes currently available include:

- Multi-Academy Trust Executive Leadership Programme
- Beyond Monitoring (Primary)
- Leadership of Learning (Middle & Secondary)
- Deputy Head/Senior Leadership Team Development
- Middle Leadership Programme
- Getting to Great

Full details of the programme are available on our website: <http://www.babcockprime.co.uk/school-effectiveness/school-improvement/leadership-programmes>

- Secure high quality leadership
- Support the school's continued development

External Review of Governance

The review identifies areas for development and provides guidance on how these can be achieved and improved on in relation to Ofsted inspection criteria. For schools/settings with a judgement of 'inadequate' or 'requires improvement'

- Improve Ofsted judgements
- Secure high quality leadership

(Our support offer is not limited to the solutions above. For further details of our support offer and related training or professional development opportunities, please visit www.babcockprime.co.uk)

Service Level Agreement

Cost

Supported Peer Review

Package 1: £990
Package 2: £1,735

Leadership Success Programme

Visit: www.babcockprime.co.uk/training-conferences for scheduled dates

External Review of Governance

£1,250, purchase: 5 x 3hrs
£1,500, purchase: 6 x 3hrs

Teaching, Learning and Assessment

The School Improvement (SI) Team provides support to enhance the quality of teaching, learning and assessment. Tailored curriculum design, models and approaches, including key stage reviews, resource management, innovative learning environments and skills based curriculum development to ensure your pupils experience interesting, relevant and engaging learning opportunities.

Support for subject expertise and pedagogy appropriate to the key stage:

- First/Primary phase specific: Literacy, Maths and Science
- Middle phases specific: Careers Advice and Guidance, Maths and Science
- Secondary phase specific: English, Careers Advice and Guidance, Maths and Science

The SI Team facilitate network meetings and training which provide up to date information, the sharing of effective practice, quality assurance and updates on Ofsted inspection practice.

Example of support

Curriculum Review and Design

Bespoke consultancy service and objective review of school curriculum to help improve teaching and learner outcomes. Provided as a whole school review or with a specific focus which may include:

- Analysis of curriculum strengths and areas for development
- Secure strategic planning to transition curriculum change
- Learner surveys and/or interviews regarding engagement and challenges in lessons
- Scrutiny of learners work across key stages and curriculum areas to explore progression
- Observations or 'learning walks' in specific curriculum areas
- Workshops and/or individual support for designing and planning a curriculum enabling progress
- Workshops and/or individual support for specific curriculum areas, for example, resources to engage and challenge all learners

- Confidence that curriculum meets government expectations
- Improved outcomes for pupils through improved levels of engagement and challenge
- Renewed energy and interest to identified areas of curriculum
- Assured pupil progression across key stages

Coaching

Professional Development through coaching support. Personalised coaching support for teachers across all phases at any stage in their professional career.

- Individual coaching in the classroom (Good - Outstanding) (Requires Improvement – Good)
- Real Time coaching for teachers
- Coaching for effective Leadership and Management of middle leaders

- Teachers aware of expectations required
- Enhance the quality of provision and support better outcomes for pupils
- Develop teachers' pedagogical knowledge and understanding
- Support teachers in meeting the statutory Teachers' Standards

Subject Consultancy

Schools can choose from a range of bespoke support visits to improve progress and attainment in specific curriculum subjects.

- Mentoring subject coordinators and new or non-specialist teachers
- Developing questioning
- Using assessment for learning
- Enhance the quality of practical activity
- Provide ongoing professional development for teachers

- Improve achievement in core subjects
- Narrow the pupil premium gap
- Improve the quality of teaching
- Develop the leadership capacity of staff

(Our support offer is not limited to the solutions above. For further details of our support offer and related training or professional development opportunities, please visit www.babcockprime.co.uk)

Example of support

Subject Network Briefings

Termly briefings to provide topical issues, national policy and local updates related to specific subject areas.
A valuable opportunity to network with colleagues from other schools and subject experts and share leading practice.

- Enhance the quality of provision and support better outcomes for pupils

Better Inspection for all – Teaching, Learning and Assessment

- Subject review and audit of teaching and learning
- Interview with an agreed range of staff and pupils
- Lesson observations or learning walks
- Advice on delivering inspiring lessons
- Written report with clearly defined strengths and areas for development

- Improve outcomes for pupils

An External Review of Strategies and Policies

Advice, bespoke consultancy and exemplar documents to support senior leaders through an external evaluation of the school's key strategies and policies. Provided as a whole school evaluation or with a specific focus on core subjects. Support can include:

- Reviewing the quality of self-evaluation documentation and action planning.
- Evaluating the quality of monitoring, evaluation and training schedule
- Providing an external view and recommendations
- Providing exemplar materials

- Improve or sustain Ofsted judgements

Effective Use of Assessment and Data

Bespoke consultancy to support and challenge on best use of assessment of pupil progress and attainment in life without levels.

- Evaluation of present assessment systems and recommendations for improvement
- Support to enhance the accuracy and consistency of teacher assessment
- Workshops for staff and senior leaders on specific strategies and accuracy of assessment
- Review and evaluation of assessment systems in partnership with SLT
- Support to make best use of performance data to inform self-evaluation

- Improve or sustain school Ofsted judgements
- Enhance the quality of provision and support better outcomes for pupils

(Our support offer is not limited to the solutions above. For further details of our support offer and related training or professional development opportunities, please visit www.babcockprime.co.uk)

Service Level Agreement	Cost
Curriculum Review and Design <i>The exact support required, dates and times are discussed with the school prior to delivery. Multiple sessions can be purchased to achieve required service level.</i>	£250 (3hrs)
Coaching	£250 (3hrs)
Subject Consultancy	£250 (3hrs)
Subject Network Briefings	POA
Better Inspection for all – Teaching, Learning and Assessment	£990 <200 pupils on roll £1,980 >200 pupils on roll
An External Review of Strategies and Policies	£250 (3hrs) <i>The exact support required, dates and times are discussed with the school prior to delivery.</i>
Effective Use of Assessment and Data	£250 (3hrs) <i>The exact support required, dates and times are discussed with the school prior to delivery.</i>

Example of support

NQT Induction

As the appropriate body, on behalf of the Local Authority, we have the experience and expertise to provide NQT induction services for all schools, across all phases.

- Registration of an NQT
- Reporting the status of your NQT to National College of Teaching and Leadership
- Help-desk
- Welcome pack, guidance material and Professional Development Portfolio
- Assessment system for production and submission of termly progress reports
- Discounted attendance at Babcock Induction Tutors Conference and Annual NQT conference
- Support for the school in the event of a formal complaint about a school's assessment or judgement

- Improve effectiveness
- Improve confidence and ability of NQT
- Quality Assurance

Primary Assessment Support and Moderation

All non-maintained schools are required to comply with national assessment arrangements as part of their funding agreement. This includes monitoring of tests and moderation of teacher assessments. Non-maintained schools must select a service provider for Key Stage 1 and Key Stage 2 monitoring and moderation activities as there is a statutory responsibility to ensure a provider is in place.

KS1 or KS2 Assessment Support Package (Primary, First & Middle Schools)

- E-mail and telephone access to a team of advisers able to give advice relating to assessment including teacher assessment and statutory testing
- Advice on the Phonics Screening Check and P Levels
- Monitoring of KS2 tests
- Advice on teacher assessment of writing for Year 6

Primary Assessment Support Package

This package incorporates both the Key Stage 1 and Key Stage 2 Support Packages as outlined above

Moderation Packages

This can be added to the cost of the Key Stage 1, Key Stage 2 or Primary Assessment Support package if your school is selected for a moderation visit

Key Stage 1 Moderation Package includes:

- Half-day moderation visit to the school by an assigned moderator(s) to verify teacher assessment judgements
- A brief written report and suggestions for next steps

Key Stage 2 Moderation Package includes:

- An assigned moderator(s) and a moderation visit to the school to verify teacher assessment
- A brief written report focused on judgements in writing and suggestions for next steps

- Ensure that all statutory requirements are fully met

Service Level Agreement

NQT Induction

Cost

3 Terms (up to 3 NQTs): **£339** per NQT
(for each additional NQT above 3: **£75** per NQT)
2 Terms: **£255** per NQT
1 Term: **£185** per NQT

KS1 or KS2 Assessment Support Package (Primary, First & Middle Schools) *(please choose KS1 or KS2 at time of purchase)*

£144 plus VAT

Primary Assessment Support Package

£273.60 plus VAT

Key Stage 1 Moderation Package

Key Stage 2 Moderation Package

For MATs of 5 or more schools, a 5% discount will be applied

- 0 - 320 pupils on roll **£414** plus VAT (1 assigned moderator)
- 321-450 pupils on roll **£738** plus VAT (2 assigned moderators)
- 451 or more pupils on roll **£1,062** plus VAT (3 assigned moderators)

Narrowing the Gap

The School Improvement Team are able to provide external challenge and support to headteachers, governors and senior leaders to build capacity of the school, raise levels of attainment and improve pupil progress. The service offer has been developed to be as flexible as possible to support a school's individual needs.

Example of support

Effective practice in meeting the needs of vulnerable pupils, including those with SEND

Developing the leadership of SEND/ Inclusion through consultancy and/ or conducting a whole school needs audit to improve provision in order to accelerate progress and improve outcomes for the most vulnerable pupils in your school. Activities can include:

- A review of whole school provision, organised in consultation with SLT, based on agreed objectives, joint activities and clear evaluation
- A learning walk/lesson observations/ work scrutiny/learner discussions
- Analysis and evaluation of school data to determine the impact of provision on learner progress and outcomes
- Providing recommendations to ensure that all learners make at least expected progress and that attainment gaps are narrowed between different groups
- A review of the SEND Information Report and key policies
- 1:1 consultancy with SENCo/Inclusion lead
- Developing provision management systems for mapping and evaluating the quality and impact of provision in place
- Training for whole staff, groups or individuals

- Narrow the gap between the attainment of vulnerable learners and their peers

Pupil Premium Audit

Improve your school's pupil premium strategy:

- Review/evaluate existing provision, with a focus on data
 - Explore new ways of supporting the progress of disadvantaged pupils
 - Identify key strategies and effective interventions that help to close the attainment gap
 - Identify training needs
 - Support you in reporting on the impact of pupil premium funding and provision
- Includes:
- Preparation for visit based on audit document and data scrutiny
 - Time in school focusing on key areas identified
 - Report outlining strengths and areas for development

- Ensure you harness pupil premium funding
- Drive aspirational outcomes
- Ensure a positive commentary on 'the attainment and progress of pupils eligible for the pupil premium'

An External Review of Strategies and Policies

Advice, bespoke consultancy and exemplar documents to support senior leaders through an external evaluation of the school's key strategies and policies. Provided as a whole school evaluation or with a specific focus on core subjects. Support can include:

- Reviewing the quality of self-evaluation documentation and action planning
- Evaluating the quality of monitoring, evaluation and training schedule
- Providing an external view and recommendations
- Providing exemplar materials

- Improve or sustain Ofsted judgements

(Our support offer is not limited to the solutions above. For further details of our support offer and related training or professional development opportunities, please visit www.babcockprime.co.uk)

Example of support

Inclusion Network Meetings

Network meetings will focus on the following aspects:

- National and local SEND/Inclusion updates
- Responding to SENCos' needs and requirements and provide solution focussed strategies
- Opportunities to share and discuss effective practice
- Information in relation to wider CPD opportunities and developments within Babcock Prime

- Enhance the quality of provision and support better outcomes for pupils

Better Inspection for All – Inclusion

Provide an external perspective on the effectiveness of behaviour, welfare and outcomes for learners.

- Pre-review to plan key activities and review timetable
- Joint activities, for example lesson observation, learner discussions and teacher feedback
- CPD on conducting self-evaluation activities and providing teacher feedback
- Written report with clearly defined strengths and areas for development

- Improve outcomes for pupils
- Validation of the school's own judgement

(Our support offer is not limited to the solutions above. For further details of our support offer and related training or professional development opportunities, please visit www.babcockprime.co.uk)

Service Level Agreement	Cost
<p>Effective practice in meeting the needs of vulnerable pupils, including those with SEND <i>The exact support required, dates and times are discussed with the school prior to delivery.</i></p>	<p>£250 (3hrs) <i>Multiple sessions can be purchased to achieve required service level.</i></p>
<p>Pupil Premium Audit <i>Don't forget... The Pupil Premium Audit itself is an effective and legitimate use of Pupil Premium funds</i></p>	<p>Level 1: £745 (9hrs) 3 hours in school Level 2 £990 (12hrs) Same as Level 1 but with 6 hours in school. <i>Recommended for larger schools or those with more than one site.</i></p>
<p>An External Review of Strategies and Policies <i>The exact support required, dates and times are discussed with the school prior to delivery.</i></p>	<p>£250 (3hrs) <i>Multiple sessions can be purchased to achieve required service level.</i></p>
<p>Inclusion Network Meetings <i>The exact support required, dates and times are discussed with the school prior to delivery.</i></p>	<p>Delegate price from £40 (subject to booking conditions) <i>Visit CPD online for scheduled dates and to book your place: https://cpd.babcockprime.co.uk/cpd/</i></p>
<p>Better Inspection for All – Inclusion <i>The exact support required, dates and times are discussed with the school prior to delivery.</i></p>	<p>£990 <200 pupils on roll £1,980 >200 pupils on roll <i>Multiple sessions can be purchased to achieve required service level.</i></p>

Better Inspection for All

Highly experienced consultants with in-depth knowledge will provide an objective view of your school, the quality of teaching, learning and assessment aligning the results to the September 2016 Ofsted Framework. You will be confident that your setting is meeting statutory requirements and implementing effective practice.

Example of support

Better Inspection for All – Whole School Improvement

- Pre-review meeting
- Joint observations of lessons
- Feedback with senior leaders
- Desktop risk assessment data analysis
- Written report on the agreed review areas with clearly defined strengths and areas for development
- Validation of the school's own judgement
- CPD for school leaders on conducting self-evaluation activities

Better Inspection for all – Teaching, Learning and Assessment

- Subject review and audit of teaching and learning
- Interview with an agreed range of staff and pupils
- Lesson observations or learning walks
- Advice on delivering inspiring lessons
- Written report with clearly defined strengths and areas for development
- Improve outcomes for pupils
- Validation of the school's own judgement

Better Inspection for All – Inclusion

- Provide an external perspective on the effectiveness of behaviour, welfare and outcomes for learners.
- Pre-review to plan key activities and review timetable
 - Joint activities, for example lesson observation, learner discussions and teacher feedback
 - CPD on conducting self-evaluation activities and providing teacher feedback
 - Written report with clearly defined strengths and areas for development
 - Improve outcomes for pupils
 - Validation of the school's own judgement

Managing your Inspection

- This course provides support in preparing for your next Ofsted inspection. 10 top tips which have been identified from an analysis of inspections during the last year and sharing lessons learned.
- Safeguarding
 - The school environment
 - Parent View
 - Preparing governors
 - Preparing pupils
 - Telling the 'school's story'
 - Triangulating your evidence
 - Self-evaluation: So what?
 - Using data effectively
 - Preparing staff
 - Meet the requirements of the Ofsted framework

(Our support offer is not limited to the solutions above. For further details of our support offer and related training or professional development opportunities, please visit www.babcockprime.co.uk)

Service Level Agreement

Better Inspection for All – Whole School Improvement
Better Inspection for all – Teaching, Learning and Assessment
Better Inspection for All – Inclusion
Multiple sessions can be purchased to achieve required service level.

Cost

£900 <200 pupils on roll
£1,980 >200 pupils on roll

Managing your Inspection

POA



trusted to deliver™



LEADERSHIP SUCCESS

Babcock Education Leadership Programmes

Take a look at our Leadership Programmes, developed to help your school leaders manage complex organisations in an ever changing landscape.

Beyond Monitoring

Designed to empower heads and their senior leaders with the means to secure better teaching and learning. Securing effective pedagogical leadership at all levels is a key challenge for many schools and this course will provide the opportunity to further develop the skills and understanding needed to do this.

This programme consists of three separate days with practical tasks in between. Each day is a balance of practical activities and sharing your knowledge and understanding of effective teaching and learning.

- Day one – ‘Improving Teaching’ includes observations of a lesson in the school
- Day two – ‘Improving Learning’ involves looking at books, pupil progress, looking at provision and timetables
- Day three – Developing systems that work

Getting to Great Programme

This programme supports good schools on the journey to be great by developing school leadership that develops and sustains:

- A culture of unrelentingly high expectations
- Excellence in teaching, learning and assessment
- Confident, articulate self-assured learners
- Outward facing schools which are able to work with other schools to secure excellence for all pupils
- A world-class curriculum

For more information

To book or find out further details on the Leadership Programme and our CPD opportunities for headteachers, senior leaders and governors please visit: www.babcockprime.co.uk/training-conferences

Multi-Academy Trust Executive Leadership Programme

A comprehensive programme for current chief executives of independent schools that will equip you to reach your goals in growing and nurturing your organisations. This programme addresses the challenges of scaling up Multi-Academy Trusts in a sustainable and effective manner.

This programme provides participants with the strategies and skills needed to ensure they can lead with confidence and ability. As a result of this course, participants will know:

- The leadership qualities and competencies of highly effective chief executives and how to further develop these in their own leadership role
- The critical skills needed to lead and manage change in a challenging environment. How to secure the buy-in and engagement of key stakeholders
- How to build sustainable capacity across a diverse group of schools and settings
- How to build a compelling business case for expansion
- How to ensure that appropriate and effective governance structures and processes are implemented across the organisation

Middle Leadership Development Programme

Exploring leadership concepts and reflecting on practice, this six session programme stimulates leadership thinking to support and challenge participants to secure school improvement and develop personal career potential.

The sessions:

- Leading and Managing Change
- Using Data Effectively
- Aiming for Outstanding Provision
- monitoring and Evaluating Practice
- Middle Leadership Evaluation – Getting Ofsted ready

No Nonsense Programme

Specifically Designed For The New National Curriculum

The NO NONSENSE programme was devised to offer teachers a comprehensive yet accessible progression in the teaching of spelling, grammar, literacy and number facts. Guidance, rather than prescription, is provided on how to teach the strategies, knowledge and skills pupils need to learn.



The AWARD-WINNING spelling programme developed for the New Curriculum

A no-nonsense straightforward approach to spelling for Years 2-6.

The programme breaks down the curriculum requirements into termly overviews with individual lesson plans and resources.

£225

No Nonsense
Spelling

New for 2017 are 2 No Nonsense Literacy resources: No Nonsense Literacy Teaching Sequences is a series of detailed learning activities written around high-quality suggested texts that model effective and exciting writing. **£165 + VAT**

No Nonsense Literacy Assessment for Writing is designed to support teachers in making accurate, evidence based assessments of writing across KS1 and KS2

£180 + VAT

No Nonsense
Literacy

- Covers Years 1 – 6
- Grammar is taught in context and PDFs of exemplar texts are supplied on a USB stick.
- Progressive and diagnostic assessment links assessment objectives to the new performance descriptors
- Covers all strands of the new Grammar Curriculum

£250

No Nonsense
Grammar

No Nonsense Number Facts provides teachers with a coherent programme for supporting fluency in number facts in line with the aims of both the national curriculum and teaching for mastery. This pack enables you to implement an effective number facts programme for Years 1 to 6

£245 + VAT

No Nonsense
Number Facts

How to find out more:

Simply contact your local educational consultant today for further details, to arrange a visit or to place an order:

Tel: **01865 312244**

Email: feedback@raintree.co.uk

Free School Meals Eligibility Checking Service

Streamline your Free School Meals (FSM) checking process to save time and resource.

The provision offers a seamless, efficient subscription service to check eligibility of students for FSM in non-maintained schools and settings.

Example of support

This service offers:

- Assessment of applications – checking eligibility against Government criteria
 - Assistance in allocating the pupil premium fund for eligible learners
 - Assistance in capturing eligibility for those entitled to pupil premium but falling under the Universal Infant Free School Meal offer
 - Ensuring schools and settings have access to maximum funding available for FSM
 - Advice on where funding can be spent to support learners, for example, extra-curricular activities and after school clubs
 - Improve academic learning and productivity as a result of ensuring children are well-nourished
- Save time
 - Save resource

(Our support offer is not limited to the solutions above. For further details of our support offer and related training or professional development opportunities, please visit www.babcockprime.co.uk)

Service Level Agreement

Free School Meals Eligibility Checking Service SLA

This service is delivered on behalf of Worcestershire County Council as part of the commissioned service to maintained schools and settings.

Prices are based on the number of pupils on roll in non-maintained schools and settings.

Cost

1-50 on roll	£95.00
51-220 on roll	£225.00
221-440 on roll	£375.00
441-550 on roll	£425.00
551+ on roll	£750.00



To discuss your requirements contact:

Primfreeschoolmeals@babcockinternational.com | 01905 678154

*Our finance consultant has provided invaluable guidance and support to the Business and Finance team since we converted, working with us to develop the structure of the accounts and the management reports.
Business Manager, Warden Park Academy, West Sussex*

Finance Consultancy

A remote service for standalone academies or Multi Academy Trusts covering all aspects of financial planning, management and reporting.

Example of support

School in need of support to structure accounts and the management of reports

Finance Consultancy is a remote service offering:

Helpdesk support on:

- Budgeting, building long term projections and making reasonable assumptions
- Accounting and reporting issues
- Advice on period end procedures
- Preparation for year end
- Ensuring robust internal controls

Electronic tools and templates including:

- Salary budget & monthly monitoring
- Budget in EFA format
- Cash flow projections and monitoring
- Code mapping
- Capitation
- Contracts & period end adjustments
- Asset management
- Finance policy

Regular newsletters on national issues and deadlines

- Achieve best value from budgets
- Compliance to EFA requirements

Finance Training

Bespoke courses for strategic planning, benchmarking and raising external funding are also available. For more information on training please visit:

www.babcockprime.co.uk/training-conferences

- Introduction to Academy Accounting Part 1 and Part 2
- Due Diligence - questions to ask before joining a MAT

Financial Health Check

We offer DfE approved Financial Health Checks to support any school within the Trust. This service is tailored and can identify efficiency savings, support a deficit budget, carry out a review of governance or support staff re-structuring.

For further information on DfE Financial Health Checks visit:

<https://www.gov.uk/government/publications/schools-financial-health-checks-supplier-directory>

Note: We now support Orovia Budget Planning Software free within our services.

From 2017 we will be Approved Partners for PS Financials accounting software

(Our support offer is not limited to the solutions above. For further details of our support offer and related training or professional development opportunities, please visit www.babcockprime.co.uk)

Service Level Agreement

Finance Consultancy SLA

For enquiries about this service or for costs to MATs, please contact:

Email: Prime-SchoolServices@babcockinternational.com

Telephone: 0800 090 2255

Cost

Standalone academy £1,275
Multi-Academy Trusts – multi buy savings available

Human Resources

High quality sector specific professional HR support for your leadership team and governing board, enabling you to manage HR issues effectively and pro-actively. Our flexible SLA options provide resources, advice, support and consultancy on all aspects of employing and managing staff.

Example of support

HR Consultancy

We offer a flexible choice of three different SLA options:

- **Information and Resources SLA**

Access to a wide range of web-based sector specific policies, guidance and other resources to save you time and effort, as well as keeping you informed and up to date with HR issues within a school or setting context.

Policies and documents are regularly reviewed and updated to ensure they remain relevant and timely.

- **Remote Services SLA**

As well as access to information and resources this SLA also provides telephone and email access to our highly experienced and knowledgeable HR advisers who are able to support you in managing complex and challenging people management issues. Our advisers are skilled at providing insight and strategies for dealing with a range of HR issues offering workable and tailored solutions that minimise the risks to your school/academy.

This service also includes our Information and Resources package providing you with access to a wide range of high quality and sector specific web-based resources and guidance documents.

- **Comprehensive HR SLA**

In addition to the features included as part of the remote service SLA, the comprehensive HR SLA also includes a named HR Consultant for your school to provide more in depth support on complex, strategic and reactive people management issues. This includes onsite support e.g. at investigation hearings etc.

The comprehensive HR SLA is for the main activity of the organisation and does not support other functions such as extended services or other additional activities that you may be undertaking.

- Peace of mind
- Minimise risk of employment disputes and associated costs
- Keeping you informed and updated

Occupational Health

(only available when purchased in association with our Comprehensive HR or Remote Services SLAs)

- Unlimited pre-employment medical screening questionnaires
- Access to support with attendance data; its use and management
- Support with cases of alcohol, drug and substance abuse
- Unlimited management referrals for prognosis and support with cases of regular short-term absence, long-term absence, potential absenteeism or other health issues
- Recommendations regarding possible ill-health retirement
- Advice and recommendations regarding reasonable adjustments and any implications of the Equality Act 2010 for individual employees
- Recommendations regarding workplace reintegration following absence, e.g. phased return

(Our support offer is not limited to the solutions above. For further details of our support offer and related training or professional development opportunities, please visit www.babcockprime.co.uk)

Example of support

Disclosure and Barring Service Checks

Our online DBS system provides an efficient and prompt checking service meaning staff can be available for work much quicker without the need for expensive support or supervision arrangements.

- 100% online: no paper forms to check
- No postal delays or costs: DBS forms are sent securely online
- Fast service: we pass applications to the DBS the same day you approve them
- Easy to use: includes Freephone help for applicants and organisations
- Real-time updates: view the current status of DBS checks online
- Results back quicker: email alert for result notification
- No laborious checking of application forms.
- Eliminates errors on applications

- Save time
- Save resource
- Safer recruitment

Education Recruitment in Association with Eteach

For Education HR customers only, to provide support with advertising and recruitment challenges (subject to location and contract).

- Access to unlimited internet advertising on the Eteach website for teaching, support staff and children centre vacancies.
- Access to an online application management system
- Access to consultancy support and advice
- Provision of a guidance booklet and other recruitment and selection resources

- Safer recruitment
- Greater reach for advertising vacancies

(Our support offer is not limited to the solutions above. For further details of our support offer and related training or professional development opportunities, please visit www.babcockprime.co.uk)

Service Level Agreement

Cost

HR SLAs 2017/2018:								
Pupils	Up to 250	251-500	501-750	751-1000	1001-1250	1251-1500	1501+	Specials
Comprehensive HR SLA Max hours of entitlement (plus up to 6 hours for Managing Changing Staffing Needs)	£2,220 14	£2,790 18	£3,860 25	£4,856 31	£6,425 41	£7,530 50	£8,704 57	£3,860 25
Remote Services SLA	£1,757	£2,177	£3,022	£3,868	£5,137	£6,077	£7,010	£3,022
Information & Resources SLA	Annual Subscription £1,200 per school							
*Occupational Health (Subject to contract)	£461	£692	£1,157	£1,619	£2,313	£3,003	£3,696	£1,157
Disclosure and Barring Service (formerly CRB)	£7.45 administrative charge (payable in addition to standard DBS fee)							
*Simply Consultancy Bundles	10 hours £875		20 hours £1,663		30 hours £2,363		40 hours £2,975	
Education Recruitment	Subject to location and contract							

**Services only available when purchased in association with our Comprehensive HR or Remote Services SLAs and/or delivered in association with third parties*

For enquiries about this service and for costs, please contact:

HR Remote Service Desk educationhr@babcockinternational.com | 0800 073 4444 (option 3)



trusted to deliver™



***Providing support
with advertising and
recruitment challenges***

Education Recruitment SLA in association with eteach

- Benefit from unlimited advertising on the eteach website, which receives over 1 million visits and 1.2 million job views every month. Expert advice is available to make your advert stand out from the crowd
- Gain access to regional talent pools where active jobseekers have registered their interest/availability
- Minimise the time and expense of filling vacancies. Create a distinctive school profile and talent pool to attract interested candidates and generate your own database of potential employees who can receive your job alerts
- Receive support, advice, resources and on-site visits to help with the selection and appointment of leadership roles
- Collaboration between dedicated eteach and Babcock Education HR consultants ensures that we are constantly reviewing and adapting the service to meet current needs

***In a recent survey, our
customers found this
at least 3 times more
effective than any other
method of recruiting***

To find out more contact:
educationhr@babcockinternational.com
0800 073 4444 (option 3)

*“The review was undertaken in a highly professional and sensitive manner and the executive report and recommendations were concise, incisive and extremely useful in terms of moving the trust and individual schools forwards.
The recommendations have been welcomed by IT staff, leaders and teachers and support staff generally. I should like to thank Babcock Education for this excellent piece of consultancy”*
Executive Headteacher
Shrewsbury Academies Trust

Strategic ICT Consultancy

ICT consultancy to complete a strategic review of your school’s current ICT provision and computing practice and determine how best to use ICT to support all aspects of the school’s improvement.

Example of support

Understand current ICT systems and policy for both administration, teaching and learning

- Consultancy support and the production of a detailed report
- A clear ICT action plan to support the priorities as identified by the school
- Comprehensive review of current ICT provision supporting all aspects of ICT developments
- A coordinated / prioritised approach to ICT strategies
- Data is managed effectively and is used to inform key decision making
- An informed approach to rationalising infrastructure and saving potential unnecessary expenditure
- Ensure ICT is embedded effectively across all areas of the school and supports expansion plans

(Our support offer is not limited to the solutions above. For further details of our support offer and related training or professional development opportunities, please visit www.babcockprime.co.uk)

Service Level Agreement

Strategic ICT Consultancy SLA

Cost

1 to 4 days: **£671 per day**
5+ days: **£649 per day**

For enquiries about this service or for costs to MATs, please contact:

carine.jacquel@babcockinternational.com | 0776 450 2014



Online Safety

Support for schools in meeting the updated 'Keeping Children Safe in Education' DfE guidance (updated 5th September 2016). An increased emphasis on online safety in the guidelines means that by law your school now needs to have an appropriate and effective monitoring system in place.

Consultancy and training package to support schools in meeting the national requirements for online safety as part of the Safeguarding agenda and ensuring that children are safe in their use of ICT.

Example of support

Ensure filters and appropriate monitoring systems are in place to provide a safe environment for children when accessing the internet

We offer three packages of online safety support and training; all of which contain the online safety audit as a starting point

Silver package Level 1:

- Online safety audit of the school's policies, procedures, monitoring and filtering systems
- a report with recommendations moving forward
- access to sample policies
- 1hr training session to update all staff on the findings of the report and the new guidance

Gold package Level 2:

Silver package as above plus 1 day (or 2 half days) support on online safety *

Platinum Monitoring Package:

- Future digital monitoring software
- Automatically assigns a level of risk to each instance of captured activity radically reducing the amount of time spent on assessing activity & ensuring that instances of risk are easily identified
- Automatic reporting, alerts and a highly-visual user interface ensure that staff can instantaneously identify potential incidents of risk allowing early intervention and escalation where necessary

** the focus can be on policies, embedding online safety in the curriculum, effective use of social media, staff CEOP training, parents online safety workshops, student training on AUP, handling data safely, empowering students to be online safety ambassadors...*

- All school staff have improved understanding of the new national requirements and their implications
- Provide the children with a safe environment in which to learn
- Empowered staff and students

(Our support offer is not limited to the solutions above. For further details of our support offer and related training or professional development opportunities, please visit www.babcockprime.co.uk)

Service Level Agreement

Online Safety SLA

Cost

Level 1: **£671**
 Level 2: **£1,447**
 Future Digital Package: **£250** plus **£2 per pupil**, plus installation and training **£399**

For enquiries about this service or for costs to MATs, please contact:

carine.jacquel@babcockinternational.com | 0776 450 2014

Office 365

The setup, installation, training and consultancy for any aspect of Office 365 including, for example, email and SharePoint.

Office 365 is a free integrated Microsoft, cloud-based solution, providing communication tools and individual file storage.

Provides users with anytime, anywhere access on any devices and enables the use of advanced teaching tools from the Microsoft classroom suite.

Example of support

Your school requires an integrated and collaborative, cloud based solution for communication and file storage

Office 365 email implementation (Option 1)

We migrate your current email to Office 365 mail, for up to 100 users, set up a shared calendar and 2 distribution lists for your school and provide you with training materials.

SharePoint implementation (Option 2)

If you are using Office 365 mail and don't have a learning platform for your school, then SharePoint is for you. We will develop two sites for you to get you started and will personalise this to your school's identity. We will then provide you with both Administrator and User training (1 day) so that you can then manage and develop the site yourselves.

Office 365 email PLUS SharePoint implementation (Option 3)

Implementation of both Office 365 email and SharePoint, as per options 1 and 2 at a discounted rate.

- Anytime, anywhere access from any device with internet access
- Access to significant free storage in OneDrive for Business and mail box capacity
- A SharePoint collaborative environment for students, teachers and admin staff to communicate and share resources
- No monthly or annual subscriptions
- Use of teaching and learning tools such as OneNote, Sway
- New feature of Microsoft Classroom

(Our support offer is not limited to the solutions above. For further details of our support offer and related training or professional development opportunities, please visit www.babcockprime.co.uk)

Service Level Agreement

Office 365 SLA

Additional support:

- Technical ongoing support for Office 365 is available through our separate technical support SLA.
- Customised support to develop the school's SharePoint site is available on request. Please contact us for a quote

Cost

- Option 1: **£350**
- Option 2: **£1,350**
- SPECIAL OFFER:
- Option 3: **£1,550**

For enquiries about this service or for costs to MATs, please contact:

carine.jacquel@babcockinternational.com | 0776 450 2014



trusted to deliver™



Mobile Learning Solutions



Bring learning to life with LearnPads



Peace of mind that a Babcock Computing Team approved mobile solution will be set up and working to ensure that the devices can be used to raise attainment



Effective curriculum-based training ensuring that schools can start to benefit from the LearnPads quickly



Access to regular LearnPad user groups, advanced training and whole-staff training

0800 030 4760

services@babcockinternational.com

"It was great to see the Babcock consultant and our subject leader working so well together. The consultant's level of computing expertise was invaluable to us and enhanced the subject leader's leadership. Parents also gained a greater awareness and understanding of the e-safeguarding agenda during the parents evening session. Thank you for the time spent in our school, we found it very reassuring and useful" Headteacher feedback

ICT Support packages

Our ICT support packages offer a variety of tailored support options to help you deliver the best learning outcomes for your pupils.

Example of support

Computing curriculum

Our computing consultants will work with you to review the ICT/Computing practice in the context of the national curriculum requirements.

Silver

- Report on the findings helping you to produce an action plan for support moving forward
- ½ day consultancy on one or more of the aspects identified in the review

Gold

Silver package + 1 day additional consultancy

Platinum

Silver package + 2 days additional consultancy

- Empower subject leaders in Computing
- Focus on raising student attainment in computing

LearnPad Tablet

LearnPad offers a classroom tablet solution that enhances, supports and simplifies teaching and learning. Implementing LearnPad gives teachers an intuitive way to supervise and control student devices, lessons and activities, easily enabling differentiated learning and access to digital content.

The service includes the delivery, set up and initial training, ensuring your LearnPads are ready for effective use in the classroom.

- Easy to use
- Mobile throughout the school

SIMS Service Desk Support

Gold Service (Enhanced)

Provides unlimited access to the Service Desk, offering remote support and assistance for all SIMS, FMS, Discover and SOLUS faults and issues. The service also includes technical remote support for the SIMS server and admin workstations and the completion of all SIMS, FMS, Discover and SOLUS upgrades, patches and fixes.

Silver Service

Provides the same support as the GOLD SLA except for the completion of SIMS, FMS, Discover and SOLUS upgrades.

Statutory Return support

Support for statutory returns can be purchased separately for those schools that choose not to purchase either GOLD or Silver SIMS support as above.

- Unlimited helpdesk support
- Upgrades at a time that is convenient for the school

Encompass Curriculum Solution

Encompass offers the flexibility of being able to upgrade your ICT solution, avoiding the need for more complex overlay software and operating systems. Particularly suitable for first, primary and middle schools.

Current Encompass features include but is not limited to:

- Windows Server 2012, Windows 7, Microsoft Office 2013 and Office 365
- Sophos Enterprise Console Anti-Virus solution
- Removable hard disk drives providing a disaster recovery solution
- Integration of existing compatible curriculum application
- Shared folder areas
- 'One Click' solution to turn off all PCs

- Cost effective
- Minimum maintenance required
- Minimise ICT downtime and disruption to the school day
- Increase classroom productivity
- Increase in teaching time

(Our support offer is not limited to the solutions above. For further details of our support offer and related training or professional development opportunities, please visit www.babcockprime.co.uk)

“There was clear improvement with the implementation of the managed service... all issues are addressed and resolved. We like having the expertise available to us... there is no need for staff to take time out of their day to deal with IT issues because Babcock will do it for us”

Example of support

Online Backup

Fully encrypted and managed online backup for admin and curriculum servers. The service uses only CAPITA approved technology ensuring correct backup of all SIMS and FMS data. Backups are monitored daily with schools receiving a daily email confirming the status. Data restores and disaster recovery are included in our ISO 27001 and ISO 9001 certified service.

- Cost effective
- Secure and compliant with Ofsted requirements

Managed ICT Service

Fully managed unlimited technical support, maintenance, secure offsite backup, monitoring and service reporting for your schools existing ICT system or the Babcock Encompass Curriculum Solution.

- Cost effective
- Unlimited technical support

MIS Strategic Consultancy

Strategic consultancy to develop your MIS, the effective use of information management to support teaching and learning and school management. We will work with your leadership team and key members of staff to undertake a thorough review of your MIS and report on recommendations for enhancing the use of MIS in your school.

- Effective decision making and school planning to improve learner outcomes

Infrastructure and Design Consultancy

Are you looking to expand facilities, undertake a new build or form a MAT?

This strategic consultancy service supports ICT infrastructure design and rationalisation for any school considering replacing, refreshing or redesigning the school ICT provision.

Following a thorough review we will produce a detailed report to ascertain capability, capacity and requirements and include recommendations for future development of school ICT infrastructure

- Cost savings
- Effective decision making and school planning to improve learner outcomes

(Our support offer is not limited to the solutions above. For further details of our support offer and related training or professional development opportunities, please visit www.babcockprime.co.uk)

Service Level Agreement	Cost
Computing curriculum SLA	Level 1: £928 Level 2: £1,599 Level 3: £2,270
LearnPad SLA	Prices start at £2,299 for a classroom set of 8
Sims Service Desk Support	Gold: £1,271 Silver: £1,129 Statutory Returns Only: £150
Encompass Curriculum Solution	Price on application
Online Backup	Price on application
Managed ICT Service	Price on application
MIS Strategic Consultancy	£671 per day (1 to 4 days) £649 per day (5+ days)
Infrastructure and Design Consultancy	£750 per day (1 to 4 days)

For initial enquiries about ICT solutions please contact:

Prime-Schoolservices@babcockinternational.com | 0800 090 2255



trusted to deliver™

Michelmores 

Start Right

Academy & MAT conversion services



For further information visit:
www.babcockprime.co.uk/academy-conversion

Service Information

Babcock Prime brings together a range of professional expertise in educational improvement, enrichment and inclusion services to support improved outcomes for children and young people.

Babcock Prime works with schools and settings, Worcestershire County Council and other local authorities and with a range of regional and national bodies. Our single integrated service enables us to understand more fully the needs of customers and to deliver the best services to meet those needs.

Quality of service provision

As a provider of services to schools, we aim to:

- Ensure a high level of satisfaction
- Work in partnership with schools to develop services that are efficient, effective and valued
- Listen and respond to customer feedback

Customer feedback

We want to ensure all of our services meet the needs and expectations of schools and settings. For this reason, we urge you to get in touch with any comments, praise or complaints you may have with any of our services so that we can work to continuously improve our offer. Our aim is to become the educational partner of choice for schools and settings.

For all comments, please contact our Regional Manager, Liz Holt, in the first instance, so that queries or concerns can be resolved through a single point of contact: **Liz.Holt@babcockinternational.com**

Meet with us

In addition to the directory, we would like to offer a Babcock Prime representative to meet with you to help inform your work and to answer questions about the services offered. The objective is to ensure all of your Babcock Prime service requirements are efficiently commissioned.

To arrange an appointment please call Abigail Keys-Clark, Traded Services Manager, on 0800 090 2255 or 07808 509803 or email:

Abigail.Keys-Clark@babcockinternational.com

Service costs and payment

Subscriptions and packages of support

All annual subscription(s) and packages should now be purchased through the Babcock Prime e-Store at: **www.babcockeducationstore.co.uk/prime**

If you have forgotten your password, please click on 'forgotten password' on the login screen. If you have any queries, please call 0800 090 2255 or email: **Prime-SchoolServices@babcockinternational.com**.

Prices exclude VAT and travel.

Information in this directory is correct at time of going to print.

Additional Purchases

Schools and settings that wish to vary their service provision i.e. buy an additional service or increase the level of an existing service can do so via the e-Store: **www.babcockeducationstore.co.uk/prime**

Bespoke training

This can be delivered in school or establishment of your choice.

Academies

Schools that transfer to academy status can contact Abigail Keys-Clark, Traded Services Manager, to discuss variations to provision:

Abigail.Keys-Clark@babcockinternational.com

MATS and Federations

MATs and Federations may also purchase services through the e-Store. All federations can set-up an account.

If you require assistance or you have any queries about services, please call 0800 090 2255 or email:

Prime-SchoolServices@babcockinternational.com

Further information and service specifications are provided on the website:

www.babcockprime.co.uk





www.babcockprime.co.uk

Babcock Prime

For the latest news about our services visit
Web: www.babcockprime.co.uk

Address: Unit 1 Woodbury Lane, Norton, Worcester, Worcestershire, WR5 2PT
Email: Prime-Schoolservices@babcockinternational.com
General enquiries/switchboard: 01905 678200
Traded services/ e-store enquiries: 0800 090 2255

V1 2017